



**DEVELOPMENT PLAN  
OF KOPRIVNICA KRIŽEVCI COUNTY  
FOR THE PERIOD 2021-2027  
- SUMMARY -**

**Koprivnica, November 2021**



## MEDIUM-TERM DEVELOPMENT VISION

Medium-term vision „**Koprivnica Križevci County is economically strong, green and connected County, a County of recognizable identity, natural and cultural heritage, prosperous for living and work until 2027**“ is planned to be achieved through three specific objectives:



### 1. CONNECTED COUNTY OF CIRCULAR ECONOMY



### 2. SOCIALLY SENSIBLE COUNTY



### 3. SMART AND GREEN COUNTY

Development Plan of Koprivnica Križevci County for the period 2021-2027 (hereafter referred as Development Plan of KKC) and development vision of Koprivnica Križevci County (hereafter referred as KKC) are in accordance with National Development Strategy of Republic of Croatia.



## DESCRIPTION OF DEVELOPMENT REQUIREMENTS AND POTENTIALS

### *POSITION, STATISTICAL DISTRIBUTION AND ADMINISTRATIVE STRUCTURE*

<b>Development requirements</b>	Improve transport connection. For KKC is important continuation of construction the highway DC 10 to Koprivnica and the border with Hungary, beginning of construction Podravina highway and completion the construction of second railroad track Križevci - state border with Hungary. Support for development projects and directing funds to local self-government units with lower development index in order to achieve balanced regional development.
<b>Development potentials</b>	Favourable geographical and traffic position. The status of an assisted area brings additional opportunities within the use of ESI Funds.

### *DEMOGRAPHY AND SOCIETY*

<b>Development requirements</b>	Stopping negative demographic trends. Promotion and active implementation of demographic renewal measures by local self-government units and KKC. More balanced development of rural areas of KKC in relation to cities.
<b>Development potentials</b>	Introduction of new demographic renewal measures by local self-government units and KKC. Using of ESI Funds and other Union Programs for the purpose of demographic revitalisation and national funds.

### *SOCIAL INFRASTRUCTURE*

<b>Development requirements</b>	Further coordination of important stakeholders in the social care system. Availability of certain social services. Social integration of the Roma national minority. Reducing at-risk-of-poverty rate.
<b>Development potentials</b>	Further improvement social services and development of new ones. Continuation of the deinstitutionalisation process. Using of ESI Funds and Union Programs for further improvement and development of social services. Implementation of the socialisation program of the Roma national minority. Strengthening the capacities of volunteering organisers and promotion of volunteering.



### ***HEALTH INFRASTRUCTURE***

<b>Development requirements</b>	<p>Increasing the number of doctors in KKC.</p> <p>Investing in the health system.</p> <p>Equalization the availability of primary health care in the entire area of KKC.</p> <p>Investments in education of population about the importance of health and disease prevention.</p> <p>Development of palliative care.</p>
<b>Development potentials</b>	<p>Continuously investments in health care and education of employees in health care.</p> <p>Availability of encouragement measures for staying doctors in KKC.</p> <p>Using of ESI Funds for further improvement health infrastructure and services in health care.</p>

### ***EDUCATIONAL AND CULTURAL INFRASTRUCTURE***

<b>Development requirements</b>	<p>Ensuring spatial capacities in primary and secondary education by investing in infrastructure with the aim of creating conditions for one-shift teaching.</p> <p>Investments in improving of students standard.</p> <p>Providing conditions for working with children with disabilities.</p> <p>Improving the educational structure of the population in KKC.</p> <p>Strengthening the capacity of civil society organisations.</p> <p>Encouraging interest for deficient craft professions.</p> <p>Encouraging lifelong learning.</p> <p>Encouraging cultural activities.</p> <p>Establishment of a Regional Competence Center in the field of agriculture and construction and other important areas.</p>
<b>Development potentials</b>	<p>Continuation of the implementation of lending and scholarship programs for pupils and students.</p> <p>Regional Center of Competence in Electrical Engineering and Computing.</p> <p>A large number of available lifelong learning programs.</p> <p>Rich cultural tradition and a large number of cultural assets.</p> <p>Promotion of KKC cultural assets.</p> <p>Continuation the work of existing civil society organisations.</p> <p>Using of ESI Funds and Union Programs for investments in educational and cultural infrastructure and programs.</p>



### ***CIVIL SAFETY AND SECURITY***

<b>Development requirements</b>	Education of the population from the KKC area on procedures in case of various threats. Education of the population from the KKC area on traffic safety, crime and other security issues. Improving the management system of all accident situations.
<b>Development potentials</b>	Civil protection system in the KKC area. Using of ESI Funds and Union Programs for investments in civil protection and security.

### ***ECONOMY***

<b>Development requirements</b>	Connecting SMEs with large business entities. Focussing on innovation and technological development by investing in green and digital transition. Resolving of property and legal terms. Greater capacity utilization in agriculture. Branding of the County as a tourist destination. Encouragement the networking of family farms, increasing accommodation capacity and expansion of existing tourism capacity.
<b>Development potentials</b>	Availability of support for existing entrepreneurs and start ups. Significant resources for development of agricultural production and tourism. Availability of ESI Funds to entrepreneurs and family farms for development investments.

### ***INFRASTRUCTURE***

<b>Development requirements</b>	Connecting Koprivnica by highway to Zagreb. Additional investments to the water supply system and sewerage system in order to all residents of KKC will have the opportunity to connect on public water supply system and sewerage system. The condition of state, county and local roads is not satisfactory, required continuous investments in road infrastructure. Development of broadband infrastructure in the KKC area.
<b>Development potentials</b>	Realization of Koprivnica, Križevci and Đurđevac Agglomerations. Construction of the state road DC 10 section: Križevci - Kloštar Vojakovački - Koprivnica - Hungarian border. Construction of Podravina highway and state road Borje - Hruškovec and Đurđevac - Bjelovar.



	<p>Construction of second railroad track Križevci - Koprivnica - state border.</p> <p>Involvement of local economy in realization of large infrastructure projects that will be implemented in KKC.</p> <p>Finalization of the started activities of recovering untreated landfills and continuation of investments in recovering of all contaminated sites.</p>
--	--

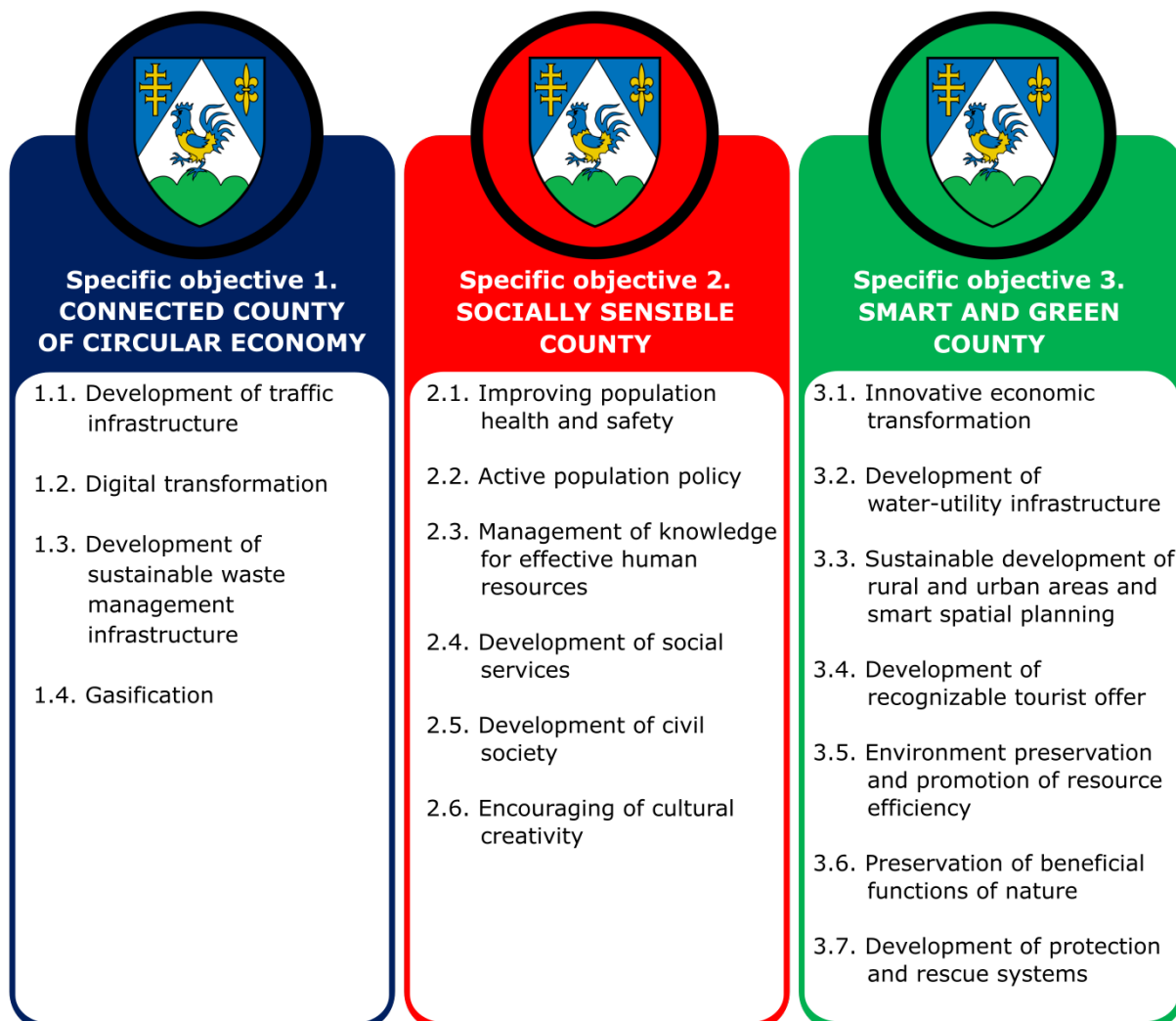
### ***ENVIRONMENT CONDITION***

<b>Development requirements</b>	<p>Systematic monitoring of area, water and soil quality and noise measurement.</p> <p>Recovering of landfills and reduction of light pollution.</p> <p>Recovering of other locations in the KKC area which represent potential risk for underground water and soil.</p>
<b>Development potentials</b>	<p>Great potential for using renewable energy sources.</p> <p>Rich reserves of drinking water.</p> <p>Wealth of mineral resources.</p> <p>Development of educational and informational infrastructure for protected area management.</p>



## DESCRIPTION OF PUBLIC POLICY PRIORITIES IN THE MEDIUM TERM

*Image 1 Specific objectives*





*Image 2 Specific objective 1 Connected County of circular economy*



## Specific objective 1. CONNECTED COUNTY OF CIRCULAR ECONOMY

### **1.1. Development of traffic infrastructure**

- 1.1.1. Development of road and railway infrastructure and other traffic infrastructure
- 1.1.2. Strengthening integrated road passenger transport and intermodal freight transport

### **1.2. Digital transformation**

- 1.2.1. Development of new generation telecommunication infrastructure
- 1.2.2. Digital transformation of public administration
- 1.2.3. Digitalisation of business entities and development of advanced digital skills

### **1.3. Development of sustainable waste management infrastructure**

- 1.3.1. RCWM Regional center for waste management "Piškornica"
- 1.3.2. Recovering of all unadjusted landfills for non-hazardous waste and construction of recycling yards in all local self-government units and sorting plants and biocomposting plants
- 1.3.3. Development of separate systems for collection and special waste categories recycling and continuous informing and education about sustainable waste management

### **1.4. Gasification**

- 1.4.1. Establishing gas distribution system for the entire county area





*Image 3. Specific objective 2. Socially sensible County*



## **Specific objective 2. SOCIALLY SENSIBLE COUNTY**

### **2.1. Improving population health and safety**

- 2.1.1. Development of health infrastructure, accessibility and development of health services
- 2.1.2. Prevention and early disease detection, prevention of youth addiction especially, promoting a healthy lifestyle and increased security of population

### **2.2. Active population policy**

- 2.2.1. Encouraging demographic renewal and retaining existing population

### **2.3. Management of knowledge for effective human resources**

- 2.3.1. Development of educational infrastructure and programs in preschool, primary, secondary and higher education and harmonisation educational programs with labour market needs
- 2.3.2. Strengthening the capacity of the Local Partnership for employment and using national measures to encouraging employment
- 2.3.3. Improvement the systems for lifelong learning
- 2.3.4. Strengthening the capacities for strategic planning, development management, strengthening of cross-county, cross-border and international cooperation and usage of ESI funds and other EU programs

### **2.4. Development of social services**

- 2.4.1. Deinstitutionalisation and introduction of new non-institutional social services
- 2.4.2. Availability of social retirement homes
- 2.4.3. Social inclusion of vulnerable groups and raising awareness about opportunities for development of social entrepreneurship
- 2.4.4. The fight against poverty and social exclusion

### **2.5. Development of civil society**

- 2.5.1. Strengthening the capacities of civil society as an important stakeholder of the county's overall development
- 2.5.2. Strengthening of volunteer work
- 2.5.3. Empowering of sports
- 2.5.4. Development of technical culture and centers of excellence

### **2.6. Encouraging of cultural creativity**

- 2.6.1. Valorisation and preservation of cultural and historical values and encouraging development of cultural creativity



*Image 4. Specific objective 3. Smart and green County*



## Specific objective 3. SMART AND GREEN COUNTY

### **3.1. Innovative economic transformation**

- 3.1.1. Alleviated access to financing and support for self-employment and start-ups
- 3.1.2. Encouraging the real sector to connection, research and development, increasing the number of patents and innovations and introducing of new technologies
- 3.1.3. Improving the investment climate, promotion the county economy and proactivity in attracting domestic and foreign investors

### **3.2. Development of water-utility infrastructure**

- 3.2.1. Development of water supply, drainage and wastewater treatment system
- 3.2.2. Development of irrigation and land drainage system
- 3.2.3. Monitoring the quality of drinking and treated wastewater

### **3.3. Sustainable development of rural and urban areas and smart spatial planning**

- 3.3.1. Development of smart settlements
- 3.3.2. Modernisation and specialisation of agricultural producers and development of hunting economy
- 3.3.3. Better access to rural development resources through local action groups system
- 3.3.4. Cadastral surveys
- 3.3.5. Creation of spatial plans
- 3.3.6. Monitoring of space condition
- 3.3.7. Development of Geographical spatial planning information system

### **3.4. Development of recognizable tourist offer**

- 3.4.1. Construction of public tourism infrastructure
- 3.4.2. Marketing support for the development of county tourism
- 3.4.3. Revitalisation of cultural and natural heritage nad other investments in tourism in the function of economic development

### **3.5. Environment preservation and promotion of resource efficiency**

- 3.5.1. Environmental monitoring, informing the public and education on sustainable economic development and environmental protection
- 3.5.2. Recovering of devastated and polluted areas in the environment
- 3.5.3. Preparation of environmental documentation necessary for sustainable development of green County
- 3.5.4. Encouraging energy efficiency in public and private sector, usage of renewable energy sources by building business and public infrastructure and housing sector
- 3.5.5. Development of smart energy management systems
- 3.5.6. Preparation of study, planning and other documentation for energy efficiency and sustainable energy sources, research and exploitation of mineral resources
- 3.5.7. Education and promotion of transitioning to a low carbon economy
- 3.5.8. Establishment energy efficient public lighting system in the area of KKC

### **3.6. Preservation of beneficial functions of nature**

- 3.6.1. Preservation of biological and landscape diversity and sustainable development
- 3.6.2. Research and monitoring of protected areas
- 3.6.3. Protected areas management planning

### **3.7. Development of protection and rescue systems**

- 3.7.1. Development of civil protection system and improvement the system of protection and rescue from large accidents
- 3.7.2. Strengthening capacities of operational protection and rescue forces



## IMPLEMENTATION AND FINANCIAL PLAN OF STRATEGIC PROJECTS IMPORTANCE FOR LOCAL AND REGIONAL SELF GOVERNMENT

The most significant strategic projects for KKC until 2029 are:

SER.NO	PROJECT NAME	PROJECT AMOUNT IN HRK	FINANCIAL RESOURCE
1.	PROJECT OF RECONSTRUCTION EXISTING AND CONSTRUCTION OF SECOND RAILROAD TRACK ON THE SECTION KRIŽEVCI - KOPRIVNICA – STATE BORDER	<b>2.420.000.000,00</b>	CONNECTING EUROPE FACILITY – CEF) – TRAFFIC SECTOR
2.	PROJECT OF CONSTRUCTION HIGHWAY, SECTION KRIŽEVCI - KLOŠTAR VOJAKOVAČKI	<b>266.100.000,00</b>	CROATIAN ROADS Plc.
3.	PROJECT REGIONAL CENTER FOR WASTE MANAGEMENT OF NORTHWEST CROATIA PIŠKORNICA	<b>448.230.229,30</b>	69,9975% COHESION FUND  20,0025% THE ENVIRONMENTAL PROTECTION AND ENERGY EFFICIENCY FUND  10,0000% KOPRIVNICA KRIŽEVCI COUNTY, MEĐIMURJE COUNTY, VARAŽDIN COUNTY, KRAPINA ZAGORJE COUNTY AND MUNICIPALITY KOPRIVNIČKI IVANEC
4.	PROJECT "IMPROVEMENT OF WATER UTILITY INFRASTRUCTURE OF AGGLOMERATION KOPRIVNICA"	<b>410.073.314,73</b>	69,22% COHESION FUND  22,56% CROATIAN WATERS AND MINISTRY OF ENVIRONMENTAL PROTECTION AND ENERGETICS  8,22% CITY OF KOPRIVNICA, MUNICIPALITIES DRNJE, ĐELEKOVEC, HLEBINE, PETERANEC, RASINJA AND KOPRIVNIČKI BREGI
5.	PROJECT CONSTRUCTION OF WATER UTILITY INFRASTRUCTURE IN AGGLOMERATIONS ĐURĐEVAC, VIRJE AND FERDINANDOVAC	<b>282.013.010,84</b>	69,60% COHESION FUND  28,37% CROATIAN WATERS AND MINISTRY OF ENVIRONMENTAL PROTECTION AND ENERGETICS  2,03% CITY OF ĐURĐEVAC, MUNICIPALITIES FERDINANDOVAC, VIRJE, NOVO VIRJE, KLOŠTAR PODRAVSKI AND NOVIGRAD PODRAVSKI



6.	PROJECT IMPROVEMENT OF WATER UTILITY INFRASTRUCTURE OF AGGLOMERATION KRIŽEVCI	256.370.225,10	70,15% COHESION FUND 23,88% CROATIAN WATERS AND MINISTRY OF ENVIRONMENTAL PROTECTION AND ENERGETICS 5,97% CITY OF KRIŽEVCI
7.	PROJECT CENTER OF COMPETENCE IN KOPRIVNICA KRIŽEVCI COUNTY	30.021.538,54	85% EUROPEAN REGIONAL DEVELOPMENT FUND 15% STATE BUDGET
8.	PROJECT DEVELOPMENT OF COMPETENCIES THROUGH WORK-BASED LEARNING	30.027.720,85	85% EUROPEAN SOCIAL FUND 15% STATE BUDGET
9.	PROJECT ESTABLISHMENT OF INFRASTRUCTURE FOR OFFERING OF SOCIAL SERVICES OF CENTER FOR SOCIAL CARE ĐURĐEVAC	6.626.036,85	100% EUROPEAN REGIONAL DEVELOPMENT FUND
10.	PROJECT ESTABLISHMENT A BRANCH OF THE FAMILY CENTER OF CENTER FOR SOCIAL CARE KOPRIVNICA AS SUPPORT TO THE PROCESS OF DEINSTITUTIONALISATION	5.484.791,54	100% EUROPEAN REGIONAL DEVELOPMENT FUND
11.	PROJECT HOUSE HELP CENTER KOPRIVNICA	14.884.891,35	100% EUROPEAN REGIONAL DEVELOPMENT FUND
12.	PROJECT NEW BEGINNING	9.233.880,49	100% EUROPEAN SOCIAL FUND
	<b>TOTAL TO 31.12.2023</b>	<b>4.179.065.639,59</b>	
1.	PROJECT COMPLETION THE CONSTRUCTION OF HIGHWAY DC 10 SECTION VOJAKOVAČKI KLOŠTAR - KOPRIVNICA - STATE BORDER WITH HUNGARY	2.300.000.000,00	CROATIAN ROADS Plc.
2.	PROJECT CONSTRUCTION OF NEW BUILDING OF KOPRIVNICA SECONDARY SCHOOL	110.000.000,00	MECHANISM FOR RECOVERY AND RESISTANCE
3.	PROJECT UPGRADE OF GYMNASIUM IVAN ZAKMARDIJA DIJANKOVEČKI KRIŽEVCI	5.750.000,00	MECHANISM FOR RECOVERY AND RESISTANCE
4.	PROJECT UPGRADE OF GYMNASIUM DR. IVAN KRANJČEV ĐURĐEVAC	9.000.000,00	MECHANISM FOR RECOVERY AND RESISTANCE
5.	PROJECT UPGRADE AND RECONSTRUCTION OF ELEMENTARY SCHOOL FERDINANDOVAC	6.000.000,00	MECHANISM FOR RECOVERY AND RESISTANCE
6.	PROJECT UPGRADE OF ELEMENTARY SCHOOL FRAN KONCELAK DRNJE	8.300.000,00	MECHANISM FOR RECOVERY AND RESISTANCE
7.	PROJECT UPGRADE OF ELEMENTARY SCHOOL ANDRIJA PALMOVIĆ RASINJA	7.000.000,00	MECHANISM FOR RECOVERY AND RESISTANCE



8.	PROJECT UPGRADE AND RECONSTRUCTION OF DISTRICT SCHOOL PODRAVSKE SESVETE	<b>10.000.000,00</b>	MECHANISM FOR RECOVERY AND RESISTANCE
9.	PROJECT RECONSTRUCTION OF ELEMENTARY SCHOOL "GRIGOR VITEZ" SVETI IVAN ŽABNO	<b>6.500.000,00</b>	MECHANISM FOR RECOVERY AND RESISTANCE
10.	PROJECT UPGRADE OF DISTRICT SCHOOL JOSIP GENERALIĆ HLEBINE WITH CONSTRUCTION OF OUTDOOR SPORTS FIELDS	<b>12.500.000,00</b>	MECHANISM FOR RECOVERY AND RESISTANCE
11.	PROJECT CONSTRUCTION OF NEW BUILDING OF ELEMENTARY SCHOOL KOPRIVNIČKI IVANEC AND SPORTS HALL	<b>46.000.000,00</b>	MECHANISM FOR RECOVERY AND RESISTANCE
12.	PROJECT RECONSTRUCTION AND CONSTRUCTION OF STUDENT DORM KOPRIVNICA	<b>19.500.000,00</b>	MECHANISM FOR RECOVERY AND RESISTANCE
13.	PROJECT UPGRADE AND RECONSTRUCTION OF ELEMENTARY SCHOOL SVETI PETAR OREHOVEC, DISTRICT SCHOOL FODROVEC	<b>10.000.000,00</b>	MECHANISM FOR RECOVERY AND RESISTANCE
14.	PROJECT REVITALISATION OF CULTURAL AND HISTORICAL COMPLEX INKEY IN RASINJA MUNICIPALITY	<b>120.000.000,00</b>	MECHANISM FOR RECOVERY AND RESISTANCE
15.	PROJECT REGIONAL CENTER FOR PALLIATIVE MEDICINE AND PAIN TREATMENT	<b>78.000.000,00</b>	MECHANISM FOR RECOVERY AND RESISTANCE
16.	PROJECT TERMINAL FOR COMBINED/INTERMODAL TRANSPORT IN KRIŽEVCI	<b>375.000.000,00</b>	MECHANISM FOR RECOVERY AND RESISTANCE
17.	PROJECT TERMAL SPA IN KLOŠTAR PODRAVSKI	<b>105.000.000,00</b>	ESI FUNDS 2021-2027
18.	PROJECT CONSTRUCTION OF BJELOVAR-ĐURĐEVAC ROAD	<b>390.250.000,00</b>	CROATIAN ROADS Plc.
19.	PROJECT CONSTRUCTION OF DISTRIBUTION CENTER FOR FRUITS AND VEGETABLES WITH REFRIGERATOR AND SORTING CAPACITY OF 3000 T	<b>100.000.000,00</b>	MECHANISM FOR RECOVERY AND RESISTANCE
20.	PROJECT CONSTRUCTION OF DISTRIBUTION CENTER FOR MEAT WITH REFRIGERATOR AND SLAUGHTERHOUSE CAPACITY OF 3000 T	<b>50.000.000,00</b>	MECHANISM FOR RECOVERY AND RESISTANCE
21.	PROJECT ESTABLISHMENT OF CENTER OF COMPETENCY FOR AGRICULTURE AND FOOD (SECONDARY SCHOOL KOPRIVNICA AND ECONOMIC SCHOOL KRIŽEVCI)	<b>60.000.000,00</b>	ESI FUNDS 2021-2027
22.	PROJECT ESTABLISHMENT OF CENTER OF COMPETENCY FOR	<b>50.000.000,00</b>	ESI FUNDS 2021-2027



	CONSTRUCTION (SECONDARY SCHOOL "IVAN SELJANEC" KRIŽEVCI)		
23.	PROJECT IRRIGATION OF AGRICULTURAL LAND	<b>127.800.000,00</b>	EUROPEAN AGRICULTURAL FUND FOR RURAL DEVELOPMENT
24.	PROJECT CREATING OF DATABASE ON NATURAL VALUES	<b>15.500.000,00</b>	ESI FUNDS 2021-2027
25.	PROJECT CONSTRUCTION OF OPERATION AND EDUCATION CENTER FOR CIVIL PROTECTION	<b>22.500.000,00</b>	ESI FUNDS 2021-2027
26.	PROJECT DIGITALISATION OF PUBLIC ADMINISTRATION OPERATIONS	<b>49.133.000,00</b>	BUDGET OF KKC, STATE BUDGET, ESI FUNDS 2021-2027
27.	PROJECT DEVELOPMENT OF BROADBAND INTERNET	<b>400.000.000,00</b>	BUDGET OF KKC, STATE BUDGET, ESI FUNDS 2021-2027
28.	PROJECT CONSTRUCTION OF WATER SUPPLY AND DRAINAGE SYSTEM IN THE SETTLEMENTS WHICH ARE NOT INCLUDED IN AGGLOMERATIONS KOPRIVNICA, ĐURĐEVAC AND KRIŽEVCI	<b>652.224.458,60</b>	BUDGET OF KKC AND LSG, CROATIAN WATERS, ESI FUNDS 2021-2027
29.	PROJECT PODRAVINA HIGHWAY	<b>1.904.960.000,00</b>	CROATIAN ROADS Plc.
	<b>TOTAL TO 31.12.2029</b>	<b>7.050.917.458,60</b>	
	<b>TOTAL</b>	<b>11.229.983.098,19</b>	

In the process of creation Development Plan Regional Development agency PORA KKC established a database of 497 projects in which projects are also collected from local self-government units - cities and municipalities.

Total value of these projects are 15.664.770.663,04 HRK and 12.350.000,00 HRK is value for project and technical documentation.

Distribution of funds by objectives as follows:

<b>DEVELOPMENT OBJECTIVES TOTAL</b>	<b>15.677.120.663,04 HRK</b>
<b>DEVELOPMENT OBJECTIVE 1. CONNECTED COUNTY OF CIRCULAR ECONOMY</b>	<b>9.164.850.316,81 HRK</b>
<b>DEVELOPMENT OBJECTIVE 2. SOCIALLY SENSIBLE COUNTY</b>	<b>2.027.247.488,92 HRK</b>
<b>DEVELOPMENT OBJECTIVE 3. SMART AND GREEN COUNTY</b>	<b>4.485.022.857,32 HRK</b>



## FRAMEWORK FOR MONITORING AND EVALUATION

The Regional Coordinator is in charge for monitoring the implementation of the Development Plan and it is carried out on an annual basis. The report on monitoring the implementation is submitted to the Coordination Body on 31 March of the current year for the previous year.

The County Major as the head of the body responsible for creation the County Development plan appoints the **Evaluation Committee**. Regional Coordinator is in charge of hiring an independent **evaluation team**. The Evaluation Committee is the key body that approves the evaluation methodology and the final report on the conducted evaluation.

The Evaluation Committee approves all evaluation reports, but in no way imposes or changes the conclusions or recommendations of selected independent evaluation team.

All types of evaluation must comply with the following principles:

- ✓ **Independence**
- ✓ **Customized approach**
- ✓ **Timeliness**
- ✓ **Communication and transparency.**

**Evaluation during preparation** (preliminary evaluation) is carried out in a participate and interactive way in parallel with the preparation of Development Plan. On March 2, 2021, County Major of KKC made a decision on the establishment and appointment of a team for the evaluation of the KKC Development Plan.

Evaluation during preparation is primary focused on the following:

- ✓ **Importance/relevance**
- ✓ **Efficiency/effectiveness**
- ✓ **Internal consistency**
- ✓ **External coherence.**

**Evaluation during implementation** is foreseen in 2024, at the middle of Development Plan implementation period, in order to determine degree of success the implementation and reveal the reasons for possible difficulties in implementation.

**Post-implementation evaluation** is carried out at the end of Development Plan implementation period (after 2027). It evaluates the overall process, results achieved and articulates key lessons learned and recommendations for future improvement of the strategic planning process.